



Felixstowe Court, London, E16 2RR

£210,000



## Felixstowe Court, London, E16 2RR

£210,000

Barrain London Estate Agents is pleased to introduce this spacious, well maintained and affordable one bedroom flat with communal parking and concierge.

The flat has a modern integrated kitchen, whilst the large lounge-diner with big windows ensure plenty of natural light. King George V (DLR) station is just a short few minutes walk away, so the new owner this property will benefit from frequent connections to Stratford, Bank and Canary Wharf (Elizabeth Line). Great for commuters, but also for fast transit to the West End on the weekend and Heathrow Airport! Also, this property is being sold chain free, so the sales progression can be expedited.

This is a great opportunity for first time buyers, commuters or investors to buy Thames-side at a very reasonable price

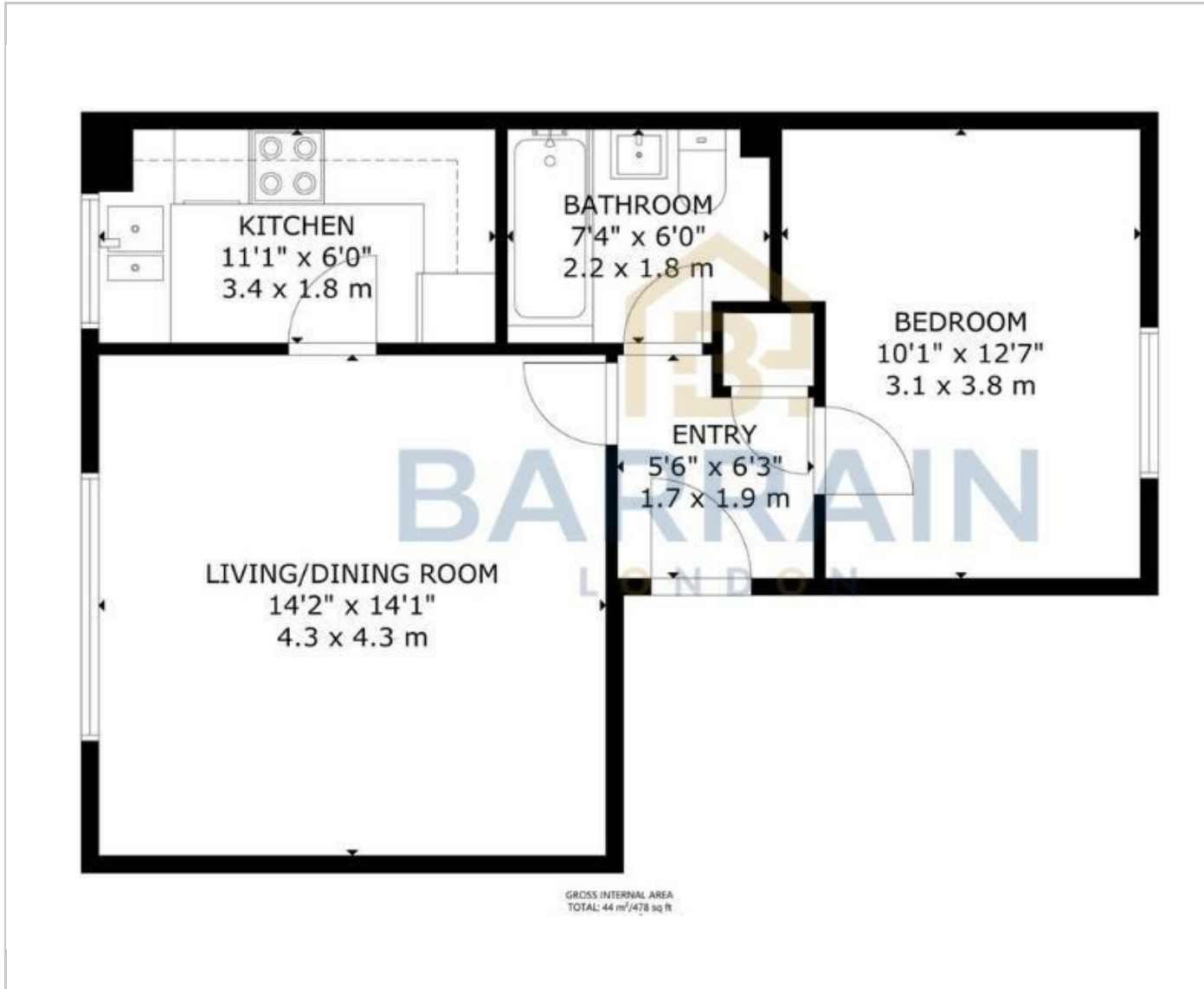
## Key Features

- Spacious one bedroom flat in great condition!
- Concierge
- Communal parking
- Chain free!
- Commuter friendly! Very near King George V DLR station: Bank, Canary Wharf (Eliz. Line)
- Long lease
- Affordable -- great for first time buyers or buy to let investors

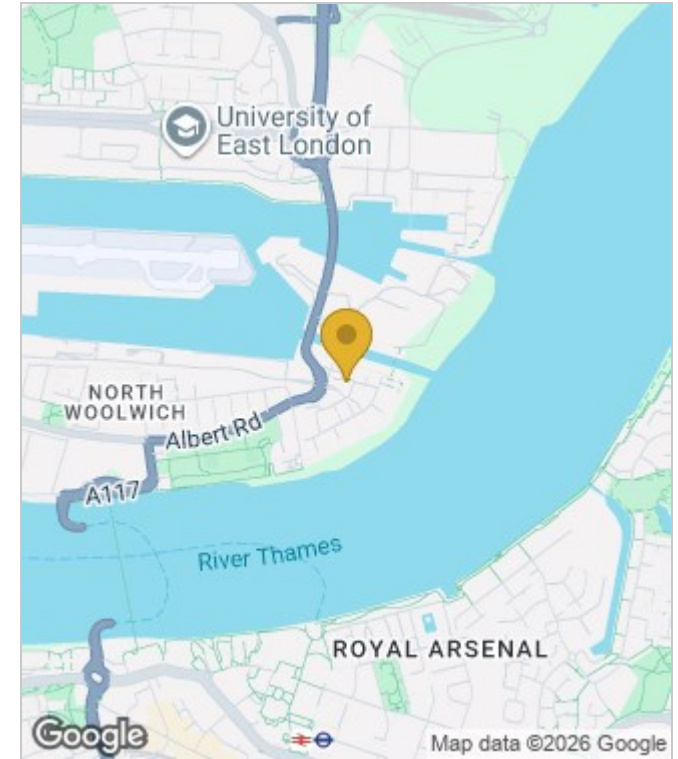


Council Tax Band: B

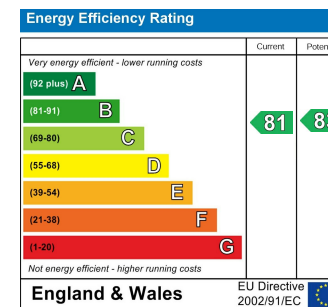
## Floor Plans



## Area Map



## Energy Performance Graph



These particulars, whilst believed to be accurate are set out as a general outline only for guidance and do not constitute any part of an offer or contract. Intending purchasers should not rely on them as statements of representation of fact, but must satisfy themselves by inspection or otherwise as to their accuracy. No person in this firm's employment has the authority to make or give any representation or warranty in respect of the property.