



10 Park Drive, London, E14 9ZW
£1,150,000



10 Park Drive, London, E14 9ZW

£1,150,000

Barrain London are pleased to introduce this stunning apartment located within the 10 Park Drive development in Canary Wharf E14. The apartment is set over approximately 1029 sq ft, offering luxury specification features within a chic open plan reception-dining room and modern kitchen lay-out, with two doubled bedrooms and two bathrooms (one ensuite). This flat includes an underground parking space, also.

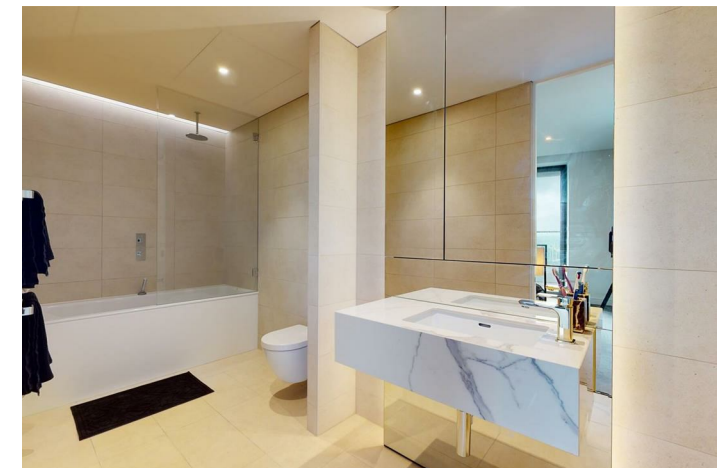
10 Park Drive is the first private development located within the Canary Wharf district, located within the new Wood Wharf development, London, E14 and very close to transport links including Canary Wharf Jubilee line, DLR and Elizabeth Line Stations. This assures the whole of greater London is a short journey away, from West End Theatres to your job in the City or elsewhere, to shopping in Stratford. Even Heathrow is only 50 minutes.

Residents will enjoy 24 hour concierge, amazing roof terrace and access to Third Space gymnasium (including swimming pool).

10 Park Drive is one of the most sought after addresses in Canary Wharf. Please call to arrange your private viewing today.

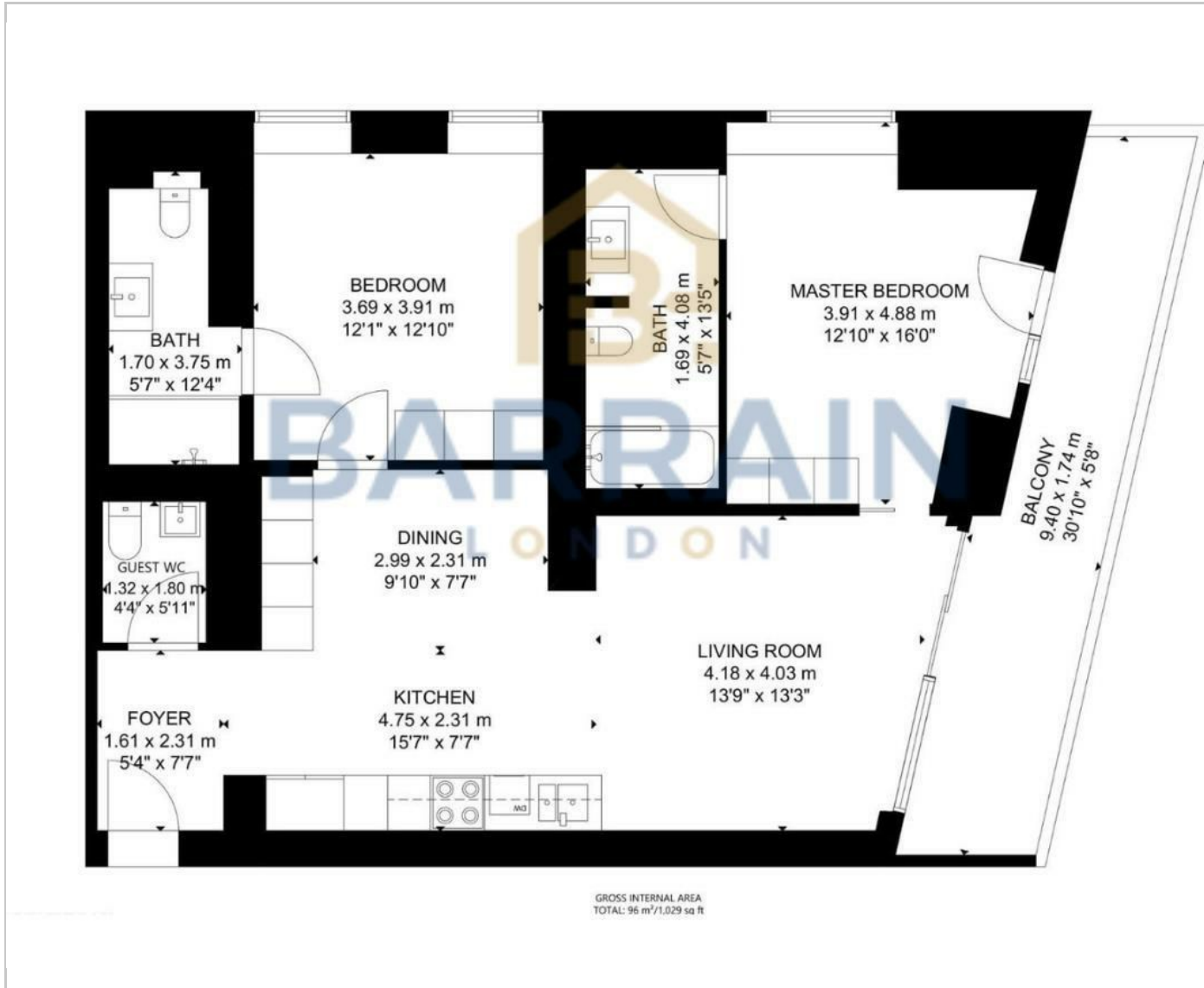
Key Features

- 10 Park Drive
- Unique 2 bedrooms, 2 bathrooms/ 1 Guest Toilet
- 24/7 Concierge
- Gym / Pool
- Underground Parking
- Roof terrace
- Dock Views

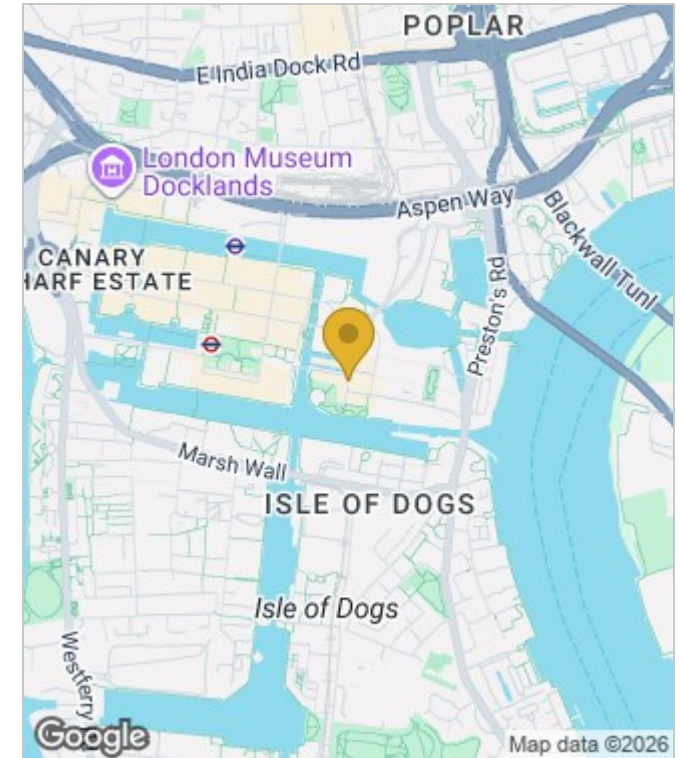


Council Tax Band: F

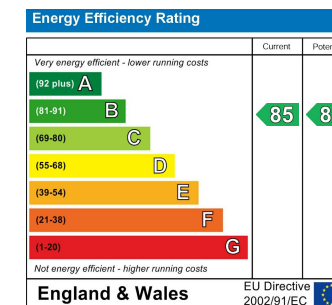
Floor Plans



Area Map



Energy Performance Graph



These particulars, whilst believed to be accurate are set out as a general outline only for guidance and do not constitute any part of an offer or contract. Intending purchasers should not rely on them as statements of representation of fact, but must satisfy themselves by inspection or otherwise as to their accuracy. No person in this firm's employment has the authority to make or give any representation or warranty in respect of the property.