



118 East Ferry Road, London, E14 3NW

**£625,000**



## 118 East Ferry Road, London, E14 3NW

£625,000

Facing east to feature fabulous sunrises, this stunning two double bedroom apartment offers 937 square feet of luxury accommodation. The very attractive open plan layout includes a contemporary, integrated kitchen and spacious lounge-diner. Through glass doors, a large terrace balcony overlooks the docklands, including the O2. Live with style, luxury and convenience, including a concierge, well kept communal gardens, and on-site gym.

Ideally located on East Ferry Road, Heritage Tower is just a short walk to Canary Wharf shops and eateries, as well the Jubilee and Elizabeth lines -- the whole of London is easily accessible. Or jump on the DLR at Crossharbour (1min walk) for a quick ride to Stratford & Westfield Mall (or go the other way to be in beautiful Greenwich in about 10 minutes.)

This property has no onward chain, so you can move in quick. Built in 2019 to a superior standard, there are 5 years left on the warranty. Do not miss this opportunity to view and buy!

## Key Features

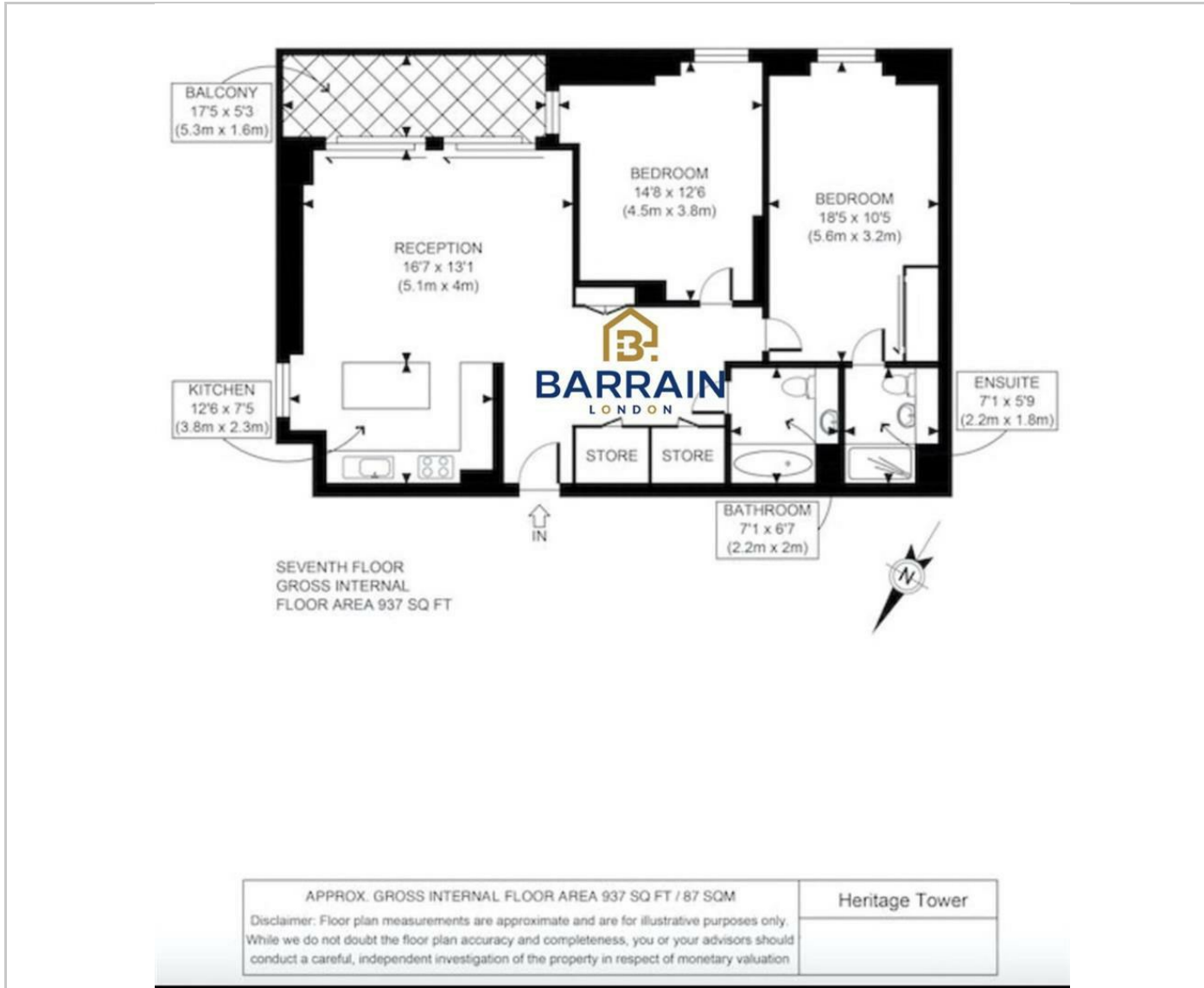
- 937 sq ft including 2 double Bedroom and 2 Bathrooms
- Concierge / Gym / Garden
- East Facing - fabulous sunrises!
- Great quality furniture pack
- Moments away from the heart of Canary Wharf
- Upgraded fixtures and fittings
- 999 Lease
- Upgraded kitchen
- 1 min from Crossharbour DLR Station

## Situation



Council Tax Band: F

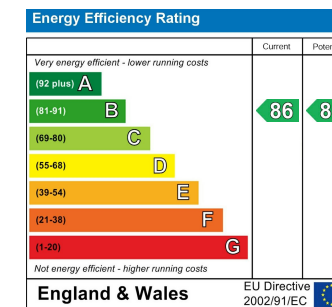
## Floor Plans



## Area Map



## Energy Performance Graph



These particulars, whilst believed to be accurate are set out as a general outline only for guidance and do not constitute any part of an offer or contract. Intending purchasers should not rely on them as statements of representation of fact, but must satisfy themselves by inspection or otherwise as to their accuracy. No person in this firm's employment has the authority to make or give any representation or warranty in respect of the property.